



One Blackfriars, Blackfriars
London SE1

GARTONJONES.COM



One Blackfriars, Blackfriars London, SE1

£825 Per Week

The apartment on offer is a spacious West facing double bedroom property on the 10th floor which will benefit from fantastic views of the London skyline. The apartment comprises an open plan reception room, full width floor to ceiling windows framing the amazing views. Additionally there is comfort cooling, underfloor heating and excellent storage. The project is very centrally located and is only a short walk from Blackfriars Underground and Overground Station. An exceptional development bound to be one of London's landmark structures and set to command a shimmering presence in the London skyline, One Blackfriars is an exceptional project with services and amenities including a private screening room, a wine room, an Executive Suite on the 32. floor, a residents' spa, a swimming pool and a fitness suite, residents at One Blackfriars will have utmost luxury at their doorsteps and will be part of an exceptional residential space. The project also features a four-storey retail building with many cafes and restaurants, a six-storey boutique hotel with a business centre and meeting rooms, and a beautifully landscaped piazza.

- 10th Floor (with lift) of 50 Floors
- West Aspect
- 1 Double Bedroom Apartment, Luxury Bathrooms
- Open Plan Reception Room with a Smart Integrated Kitchen
- Full Width Sky Garden with Stunning Views
- 24 Hour Concierge
- Health Spa with Gym, Swimming Pool, Steam Room, Sauna & Treatment Room
- Cinema Screening Room & Executive Lounge with Private Dining Facilities
- Moments From Excellent Transport Links

GARTON JONES.COM

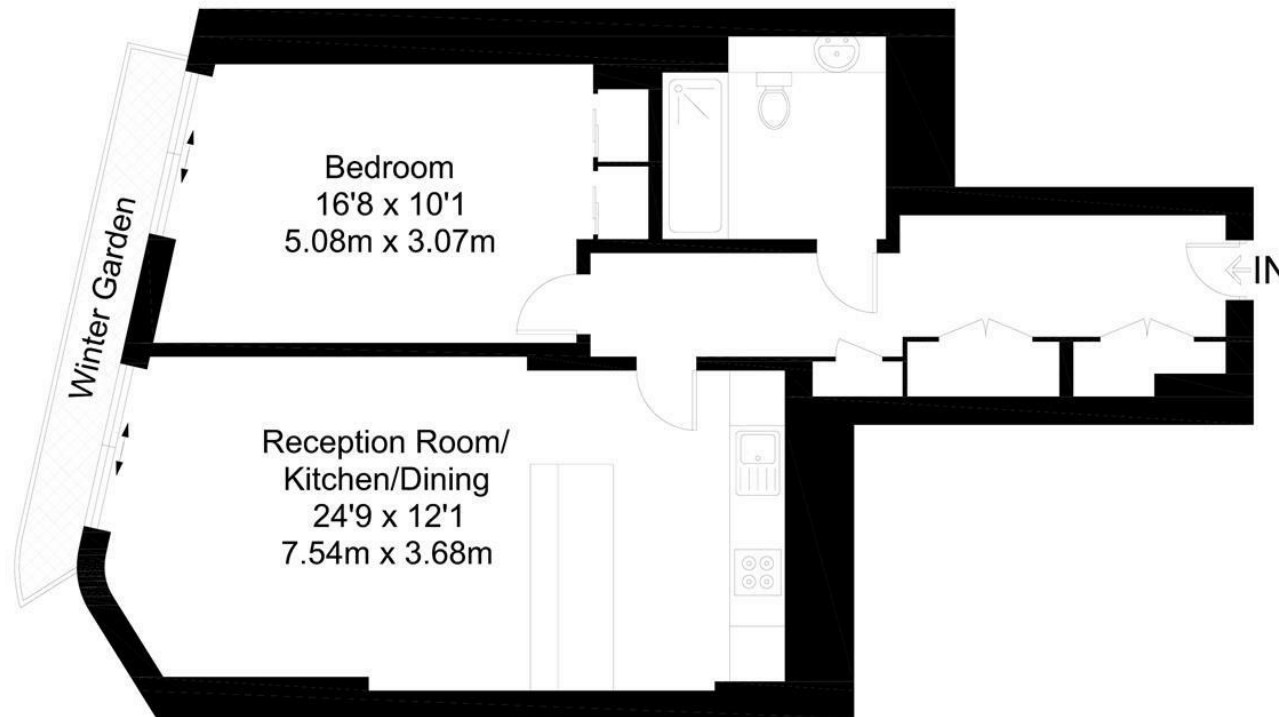
9 Albert
Embankment
London
SE1 7SP

Lettings:
+44 (0) 20 7735 1888
nineelms@gartonjones.com
www.gartonjones.com



One Blackfriars

Approximate Gross Internal Area = 674 sq ft / 62.6 sq m



Tenth Floor

Not to scale, for guidance only and must not be relied upon as a statement of fact.
All measurements and areas are approximate only and have been prepared in accordance with the current edition of the RICS Code of Measuring Practice.

